

THE PLAYERS MARQUEE

on 16 with views of 16 & 17 • Open Thursday – Sunday



The most exclusive of all settings, THE PLAYERS Marquee sponsorship allows you to “own” an exclusive hospitality venue, providing the ultimate experience for your clients. Interior and exterior seating allow for some of the best views in golf. THE PLAYERS Marquee offers views of both the par 5 16th hole from fairway to green, as well as all the excitement the 17th Island Green has to offer. From personalizing your interior décor to collaborating with the tournament’s on-course caterer to create your own menu, THE PLAYERS Marquee offers unlimited, customizable options. Ticket packages are also flexible to suit your company’s size and needs.

THE PLAYERS MARQUEE PROVIDES:

- Upscale food and premium bar available for purchase
- Listing on THE PLAYERS Marquee locator board
- Corporate identification inside THE PLAYERS Marquee
- Televisions and courtesy telephones
- Private restroom facilities
- **This investment may be deductible as an entertainment expense incurred in conjunction with a charitable sporting event. Please consult your tax advisor.**

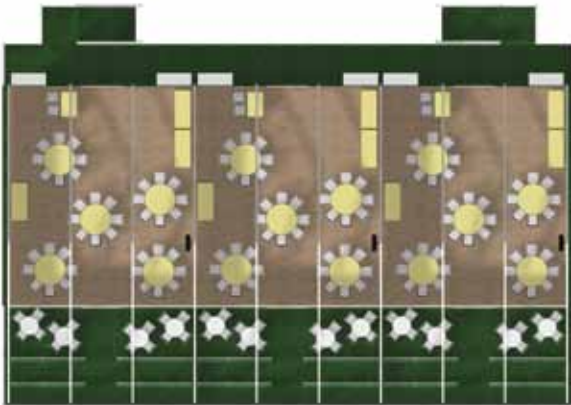
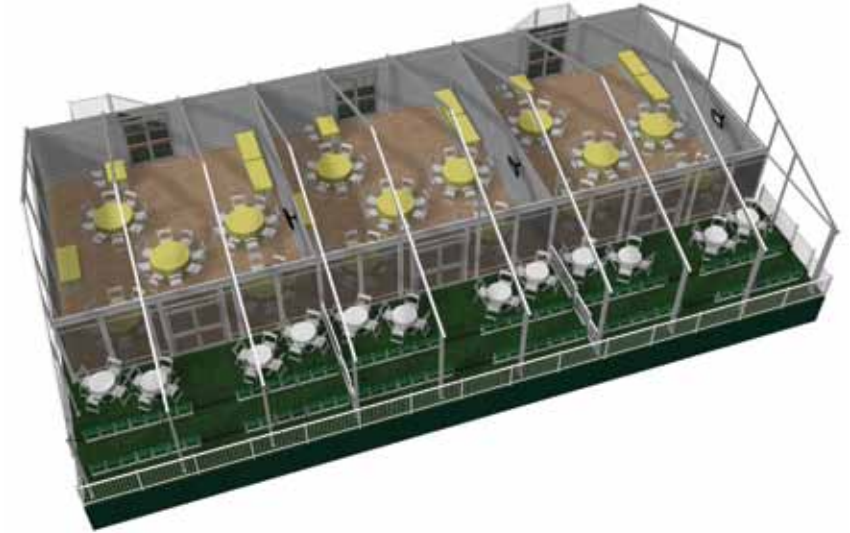
Package Includes:

- Admission for up to 100 guests per day into THE PLAYERS Marquee, Thursday – Sunday
- Additional 10 multi-venue tickets per day providing access to THE PLAYERS Marquee, TPC Sawgrass Clubhouse, The Benefactor, The Turn and Grounds, Thursday – Sunday
- Additional 20 tickets per day to The Turn, Monday – Sunday
- 6 VIP parking passes per day, Monday – Sunday
- 50 Preferred parking passes per day, Thursday – Sunday
- 2 invitations (for 2 people) to THE PLAYERS Charity Celebration



THE PLAYERS[®]

May 3-9, 2010 | TPC SAWGRASS



Together, anything's possible.

The biggest winners at THE PLAYERS Championship are the charities who benefit from the tournament's net proceeds. Since 1977, when THE PLAYERS moved to Ponte Vedra Beach, more than \$34 million has been contributed to Northeast Florida charities as a result of the tournament, including more than \$3 million in 2009. By supporting the PGA TOUR and THE PLAYERS, you are supporting local charities.

**Ask us about early bookings
and multi-year pricing!**